

КАТАЛОГ

Датчики, энкодеры, реле



Proximity Switch
Type: ALJ4A3-1-Z/[N1]



Size: $\phi 4 \times 40$

Proximity Switch
Type: ALJ5A3-1-Z/[N1]



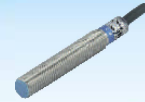
Size: M5 \times 40 \times 1

Proximity Switch
Type: ALJ6A3-1-Z/[N1]



Size: M6 \times 40 \times 1

Proximity Switch
Type: ALJ8A3-1-Z/[N1]



Size: M8 \times 45 \times 1

Proximity Switch
Type: ALJ8A3-2-Z/[N1]



Size: M8 \times 45 \times 1

Proximity Switch
Type: ALJ10A3-2-Z/[N1]



Size: M10 \times 50 \times 1

Proximity Switch
Type: ALJ12A3-2-Z/[N1]



Size: M12 \times 50 \times 1

Proximity Switch
Type: ALJ12A3-4-Z/[N1]



Size: M12 \times 50 \times 1

Proximity Switch
Type: ALJ18A3-5-Z/[N1]



Size: M18 \times 56 \times 1

Proximity Switch
Type: ALJ18A3-8-Z/[N1]



Size: M18 \times 56 \times 1

Proximity Switch
Type: ALJ24A3-8-Z/[N1]



Size: M24 \times 58 \times 1.5

Proximity Switch
Type: ALJ24A3-10-Z/[N1]



Size: M24 \times 58 \times 1.5

Proximity Switch
Type: ALJ30A3-10-Z/[N1]



Size: M30 \times 60 \times 1.5

Proximity Switch
Type: ALJ30A3-15-Z/[N1]



Size: M30 \times 60 \times 1.5

Proximity Switch
Type: ALJ38A3-18-Z/[N1]



Size: M38 \times 80 \times 1.5

Proximity Switch
Type: ASC-[30]20-[N1]



Size: M24+ $\phi 40 \times 75 \times 1.5$

Proximity Switch
Type: ASC-[30]25-[N1]



Size: M24+ $\phi 48 \times 75 \times 1.5$

Proximity Switch
Type: ASH-[30]20-[N1]



Size: $\phi 34 \times 82$

Proximity Switch
Type: ATL-Q5M[N1]



Size: 17 \times 17 \times 28

Proximity Switch
Type: ATL-N5M[N1]



Size: 25 \times 25 \times 38

Proximity Switch
Type: ATL-N10M[N1]



Size: 30 \times 30 \times 52

Proximity Switch
Type: ATL-N15M[N1]



Size: 35 \times 35 \times 52

Proximity Switch
Type: ATL-N20M[N1]



Size: 40 \times 40 \times 52

Proximity Switch
Type: ASN04-[N1]



Size: 18 \times 18 \times 36

Proximity Switch
Type: ASN05-[N1]



Size: 18 \times 18 \times 34

Proximity Switch
Type: APL-05[N1]



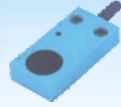
Size: 17 \times 17 \times 35

Proximity Switch
Type: APS-05[N1]



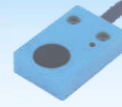
Size: 17 \times 17 \times 28

Proximity Switch
Type: ATL-W5[N1]



Size: 50 \times 25 \times 10

Proximity Switch
Type: ATL-W7[N1]



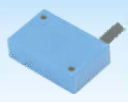
Size: 45 \times 30 \times 12

Proximity Switch
Type: AGKB-M0524[N1]



Size: 30 \times 18 \times 10

Proximity Switch
Type: AGN-04[N1]



Size: 40 \times 26 \times 12

Proximity Switch
Type: AGN-05[N1]



Size: 32 \times 22 \times 11

Proximity Switch
Type: ASJ-[30]18[N1]



Size: $\phi 42 \times 25$

Proximity Switch
Type: ASD-[30]20[N1]



Size: $\phi 48 \times 32$

Proximity Switch
Type: ASE-[30]25[N1]



Size: $\phi 55 \times 35$

Photoelectric Switch Type: AE3F1-DS5 [N1]  Size: M12×60×1	Photoelectric Switch Type: AE3F1-R1 [N1]  Size: M12×60×1	Photoelectric Switch Type: AE3F1-3D [N1] -3L  Size: M12×60×1	Photoelectric Switch Type: AE3F-DS30 [N1]  Size: M18×68×1	Photoelectric Switch Type: AE3F-R2 [N1]  Size: M18×68×1
Photoelectric Switch Type: AE3F-5D [N1] -5L  Size: M18×68×1	Photoelectric Switch Type: AE3F3-DS70 [N1]  Size: M30×90×1.5	Photoelectric Switch Type: AE3F3-R4 [N1]  Size: M30×90×1.5	Photoelectric Switch Type: AE3F3-10D [N1] -10L  Size: M30×90×1.5	Photoelectric Switch Type: AE3JK-DS30 [M1]  Size: 18×50×50
Photoelectric Switch Type: AE3JK-R4 [M1]  Size: 18×50×50	Photoelectric Switch Type: AE3JK-5D [M1] -5L  Size: 18×50×50	Photoelectric Switch Type: AE3S-□  Size: 15×21×41	Photoelectric Switch Type: AE3S-□  Size: 20×20×64	Photoelectric Switch Type: AE3S-GS7 [N1]  Size: 16×25×55
Photoelectric Switch Type: AE3S-GS15 [N1]  Size: 16×35×40	Photoelectric Switch Type: AE3S-GS30 [N1]  Size: 20×52×72	Proximity Switch (Waterproof Type) Type: HLJ8A3-1- [Z] / [N1]  Size: M8×45×1	Proximity Switch (Waterproof Type) Type: HLJ8A3-2- [Z] / [N1]  Size: M8×45×1	Proximity Switch (Waterproof Type) Type: HLJ12A3-2- [Z] / [N1]  Size: M12×50×1
Proximity Switch (Waterproof Type) Type: HLJ12A3-4- [Z] / [N1]  Size: M12×50×1	Proximity Switch (Waterproof Type) Type: HLJ18A3-5- [Z] / [N1]  Size: M18×56×1	Proximity Switch (Waterproof Type) Type: HLJ18A3-8- [Z] / [N1]  Size: M18×56×1	Proximity Switch (Waterproof Type) Type: HLJ30A3-10- [Z] / [N1]  Size: M30×60×1.5	Proximity Switch (Waterproof Type) Type: HLJ30A3-15- [Z] / [N1]  Size: M30×60×1.5
Photoelectric Switch (Waterproof Type) Type: HE3F1-DS5 [N1]  Size: M12×60×1	Photoelectric Switch (Waterproof Type) Type: HE3F1-R1 [N1]  Size: M12×60×1	Photoelectric Switch (Waterproof Type) Type: HE3F1-3D [N1] -3L  Size: M12×60×1	Photoelectric Switch (Waterproof Type) Type: HE3F-DS30 [N1]  Size: M18×68×1	Photoelectric Switch (Waterproof Type) Type: HE3F-R2 [N1]  Size: M18×68×1
Photoelectric Switch (Waterproof Type) Type: HE3F-5D [N1] -5L  Size: M18×68×1	Photoelectric Switch (Waterproof Type) Type: HE3F3-DS70 [N1]  Size: M30×90×1.5	Photoelectric Switch (Waterproof Type) Type: HE3F3-R4 [N1]  Size: M30×90×1.5	Photoelectric Switch (Waterproof Type) Type: HE3F3-10D [N1] -10L  Size: M30×90×1.5	Photoelectric Switch (Waterproof Type) Type: AE3Z-D/R□□  Size: M33.1×20×10.8

Laser Sensor Type: HG-J12-D15□□  Size: M12×65×1	Laser Sensor Type: HG-J18-D50□□  Size: M18×62×1	Laser Sensor Type: HG-J12-T20□□  Size: M12×60×1	Laser Sensor Type: HG-J18-T20□□  Size: M18×62×1	Fiber amplifier Type: E3X-NA□□  Size: M63.4×63×10
Digital fiber amplifier Type: Hg11-□  Size: M77.8×31×10	Proximity Switch (High temperature resistant type) Type: GLJ12A3-2- <u>Z</u> / <u>N1</u>  Size: M12×50×1	Proximity Switch (High temperature resistant type) Type: GLJ12A3-4- <u>Z</u> / <u>N1</u>  Size: M12×50×1	Proximity Switch (High temperature resistant type) Type: GLJ18A3-5- <u>Z</u> / <u>N1</u>  Size: M18×56×1	Proximity Switch (High temperature resistant type) Type: GLJ18A3-8- <u>Z</u> / <u>N1</u>  Size: M18×56×1
Proximity Switch (High temperature resistant type) Type: GLJ30A3-10- <u>Z</u> / <u>N1</u>  Size: M30×60×1.5	Proximity Switch (High temperature resistant type) Type: GLJ30A3-15- <u>Z</u> / <u>N1</u>  Size: M30×60×1.5	Proximity Switch (Pressure resistant type) Type: YLJ12A3-2- <u>Z</u> / <u>N1</u>  Size: M12×50×1	Proximity Switch (Pressure resistant type) Type: YLJ12A3-4- <u>Z</u> / <u>N1</u>  Size: M12×50×1	Proximity Switch (Pressure resistant type) Type: YLJ18A3-5- <u>Z</u> / <u>N1</u>  Size: M18×56×1
Proximity Switch (Pressure resistant type) Type: YLJ18A3-8- <u>Z</u> / <u>N1</u>  Size: M18×56×1	Proximity Switch (Pressure resistant type) Type: YLJ30A3-10- <u>Z</u> / <u>N1</u>  Size: M30×60×1.5	Proximity Switch (Pressure resistant type) Type: YLJ30A3-15- <u>Z</u> / <u>N1</u>  Size: M30×60×1.5	Proximity Switch (Long distance type) Type: LLJ12A3-8- <u>Z</u> / <u>N1</u>  Size: M12×50×1	Proximity Switch (Long distance type) Type: LLJ18A3-15- <u>Z</u> / <u>N1</u>  Size: M18×56×1
Proximity Switch (Long distance type) Type: LLJ30A3-25- <u>Z</u> / <u>N1</u>  Size: M30×60×1.5	Proximity Switch Type: ALJ8A3-1- <u>Z</u> / <u>N1</u> -T  Size: M8×60×1	Proximity Switch Type: ALJ8A3-2- <u>Z</u> / <u>N1</u> -T  Size: M8×60×1	Proximity Switch Type: ALJ12A3-2- <u>Z</u> / <u>N1</u> -T  Size: M12×65×1	Proximity Switch Type: ALJ12A3-4- <u>Z</u> / <u>N1</u> -T  Size: M12×65×1
Proximity Switch Type: ALJ18A3-5- <u>Z</u> / <u>N1</u> -T  Size: M18×68×1	Proximity Switch Type: ALJ18A3-8- <u>Z</u> / <u>N1</u> -T  Size: M18×68×1	Proximity Switch Type: ALJ30A3-10- <u>Z</u> / <u>N1</u> -T  Size: M30×70×1.5	Proximity Switch Type: ALJ30A3-15- <u>Z</u> / <u>N1</u> -T  Size: M30×70×1.5	Photoelectric Switch Type: AE3F1-DS5 <u>N1</u> -T  Size: M12×65×1
Photoelectric Switch Type: AE3F-DS10 <u>N1</u> -T  Size: M18×80×1	Photoelectric Switch Type: AE3F3-DS50 <u>N1</u> -T  Size: M30×90×1.5	Connector series Type: M8(Straight) 	Connector series Type: M12(Straight) 	Connector series Type: M12 

Connector series Type: M12, M8 	Capacitive Proximity Switch Type: ALJC12A3-A1- <input type="checkbox"/> /N1 /N1" data-bbox="265 120 375 175"/> Size: M12×60×1	Capacitive Proximity Switch Type: ALJC12A3-A- <input type="checkbox"/> /N1 /N1" data-bbox="440 120 550 175"/> Size: M12×60×1	Capacitive Proximity Switch Type: ALJC18A3-B1- <input type="checkbox"/> /N1 /N1" data-bbox="615 120 740 175"/> Size: M18×68×1	Capacitive Proximity Switch Type: ALJC18A3-B- <input type="checkbox"/> /N1 /N1" data-bbox="785 120 920 175"/> Size: M18×68×1
Capacitive Proximity Switch Type: ALJC24A3-T1- <input type="checkbox"/> /N1 /N1" data-bbox="85 235 210 300"/> Size: M24×68×1.5	Capacitive Proximity Switch Type: ALJC24A3-T- <input type="checkbox"/> /N1 /N1" data-bbox="265 235 385 300"/> Size: M24×68×1.5	Capacitive Proximity Switch Type: ALJC30A3-H1- <input type="checkbox"/> /N1 /N1" data-bbox="435 235 560 300"/> Size: M30×70×1.5	Capacitive Proximity Switch Type: ALJC30A3-H- <input type="checkbox"/> /N1 /N1" data-bbox="605 235 730 300"/> Size: M30×70×1.5	Displacement transducer Type: AJ3-D4 VA  Size: M12×60×1
Displacement transducer Type: AJ4-D8VA  Size: M18×68×1	Displacement transducer Type: AJ5-D10VA  Size: M24×68×1.5	Displacement transducer Type: AJCW-30QA  Size: M30×70×1.5	Displacement transducer Type: AJCW-40PA  Size: 40×40×118	Hall Sensor Type: ANJK-5001 <input type="checkbox"/> N1 N1" data-bbox="805 375 875 405"/> Size: M8×25×1
Hall Sensor Type: ANJK-5002 <input type="checkbox"/> N1 N1" data-bbox="100 490 195 525"/> Size: M12×25×1	Hall Sensor Type: ANJK-5003 <input type="checkbox"/> N1 N1" data-bbox="265 485 380 530"/> Size: M18×35×1	Hall Sensor Type: ANJK-5004 <input type="checkbox"/> N1 N1" data-bbox="445 485 545 525"/> Size: M30×35×1.5	Magnetic Switch Type: ALG8A3-10-J/A1  Size: M8×30×1	Magnetic Switch Type: ALG12A3-10-J/A1  Size: M12×50×1
Magnetic Switch Type: CS1-F  Size: 11×13×28	Magnetic Switch Type: CS1-U  Size: 11×13×28	Magnetic Switch Type: CS1-J  Size: 7×12×22.5	Magnetic Switch Type: CS1-G  Size: 4.2×5.1×26	Magnetic Switch Type: CS1-S  Size: 7×8×22
Magnetic Switch Type: CS1-R  Size: 7×9×23	Magnetic Switch Type: D-C73  Size: 8×12×27	Magnetic Switch Type: D-A73  Size: 7×10×23	Magnetic Switch Type: D-Z73  Size: 5.5×6.1×31	Magnetic Switch Type: D-A93  Size: 4×4.5×25
Color Sensor Type: BZJ-211  Size: 28×57×85	Color Sensor Type: BZJ-311  Size: 38×62×100	Color Sensor Type: BZJ-411  Size: 23×40×56	Color Sensor Type: BZJ-511  Size: 23×40×56	Color Sensor Type: KS-C2 <input type="checkbox"/> " data-bbox="810 835 890 895"/> Size: 22×63×89

Color Sensor
Type: Z3N-□22



Size: 28×48×80

Light Sensor
Type: Gm20-10



Size: 33×31×230

Light Sensor
Type: HGM20-10



Size: \varnothing 51×320

Rotary Encoder
(Absolute type)
Type: B-JSP-5606



Size: \varnothing 56
Shaft diameter: \varnothing 6

Rotary Encoder
(Absolute type)
Type: B-JSP-5008



Size: \varnothing 50
Shaft diameter: \varnothing 8

Rotary Encoder
(Absolute type)
Type: B-JSP-6010



Size: \varnothing 60
Shaft diameter: \varnothing 10

Rotary Encoder
(Increment type)
Type: B-ZSP-2504



Size: \varnothing 25
Shaft diameter: \varnothing 4

Rotary Encoder
(Increment type)
Type: B-ZSP-4006



Size: \varnothing 40
Shaft diameter: \varnothing 6

Rotary Encoder
(Increment type)
Type: B-ZSP-5006



Size: \varnothing 50
Shaft diameter: \varnothing 6

Rotary Encoder
(Increment type)
Type: B-ZSP-5506



Size: \varnothing 55
Shaft diameter: \varnothing 6

Rotary Encoder
(Increment type)
Type: B-ZSP-6006



Size: \varnothing 60
Shaft diameter: \varnothing 6

Rotary Encoder
(Increment type)
Type: B-ZPB-4006



Size: \varnothing 40
Shaft diameter: \varnothing 6

Intelligent Temperature Controller
Type: XMTG-8000



Size: 42×42×81

Intelligent Temperature Controller
Type: XMTD-8000



Size: 71×71×81

Intelligent Temperature Controller
Type: XMTA-8000



Size: 95×95×81

Intelligent Temperature Controller
Type: XMTE-8000



Size: 47×95×81

Intelligent Temperature Controller
Type: XMTH-8000



Size: 95×47×81

Miniature relay
Type: HH52PL



Size: 27×21×35

Miniature relay
Type: HH53PL



Size: 27×21×35

Miniature relay
Type: HH54PL



Size: 27×21×35

Miniature relay
Type: HH62P



Size: 27×21×35

Miniature relay
Type: HH63P



Size: 27.5×31×35

Miniature relay
Type: HH64P



Size: 27.5×41×35

Miniature relay
Type: JQX-13F-2Z



Size: 27×21×35

Miniature relay
Type: JQX-13F-3Z



Size: 27.5×31×35

Miniature relay
Type: JQX-13F-4Z



Size: 27×41×35

Miniature relay
Type: JQX-10F



Size: 35×35×53

Miniature relay
Type: MK2P-1



Size: 35×35×53

Miniature relay
Type: MK3P-1



Size: 35×35×53

Miniature relay
Type: PRD 14 24



Miniature relay
Type: PRA 11 22



Solid State Relay
Type: JGX-3F



Size: 33×17×17

Solid State Relay
Type: JGX-5F



Size: 38×22×12.5

Solid State Relay
Type: JGX-8F



Size: 39×13×22

Solid State Relay
Type: JGX-4840DA



Size: 60×45×28

Solid State Relay
Type: JGX-66[60]DA-H



Size: 60×45×28

Solid State Relay
Type: JGX-48[40]AA



Size: 60×45×28

Solid State Relay
Type: JGX-66[60]AA-H



Size: 60×45×28

Solid State Relay
Type: JGX-25[30]DD



Size: 60×45×28

Solid State Relay
(Resistance Type)
Type: JGX-38[40]RA



Size: 60×45×28

Solid State Relay
(Voltage type)
Type: JGX-38[40]UA



Size: 60×45×28

Three Phase Solid State Relay
Type: JGX-3-48[60]DA



Size: 105×75×38

Three Phase Solid State Relay
Type: JGX-3-66[120]DA-H



Size: 105×75×38

Three Phase Solid State Relay
Type: JGX-3-48[60]AA



Size: 105×75×38

Three Phase Solid State Relay
Type: JGX-3-66[120]AA-H



Size: 105×75×38

Solid State Relay
Type: JGX-G-48[100]DA(AA)



Size: 60×45×30

Industrial Grade Solid State Relay
Type: JGX-G-48[80]DA(AA)



Size: 92×20×37.5

Industrial Grade Solid State Relay
Type: JGX-G-48[100]DA(AA)



Size: 94×25×38

Industrial Grade Solid State Relay
Type: JGX-G-48[200]DA(AA)



Size: 94×34×42

Industrial Grade Solid State Relay
Type: JGX-G-48[400]DA(AA)



Size: 108×53×48

Three Phase Motor Positive Inversion
Type: JGX-3ZF-48[40]DA



Size: 105×75×38

Semiconductor thyristor module
Type: MT.C.K.A.X



Size: 92×20×37.5

Semiconductor thyristor module
Type: MT.C.K.A.X



Size: 94×34×42

Semiconductor thyristor rectifier module
Type: MT-S.Q.MF-S.Q



Size: 94×73×37

Semiconductor thyristor rectifier module
Type: MTQ.F.HF



Size: 94×73×37

Semiconductor rectifier tube module
Type: MDC.K.A.X



Size: 92×20×37.5

Semiconductor Rectifier Tube Module
Type: MDC.K.A.X



Size: 94×34×42

Semiconductor rectifier tube module
Type: MDQ



Size: 60×40×34

Semiconductor Rectifier Tube Module
Type: MDS



Size: 60×40×34

Proximity switch model implication description

$\frac{A}{\langle 1 \rangle}$ $\frac{LJ}{\langle 2 \rangle}$ $\frac{\square}{\langle 3 \rangle}$ $\frac{12}{\langle 4 \rangle}$ $\frac{A3}{\langle 5 \rangle}$ $-$ $\frac{4}{\langle 6 \rangle}$ $-$ $\frac{Z}{\langle 7 \rangle}$ $/$ $\frac{N}{\langle 8 \rangle}$ $\frac{1}{\langle 9 \rangle}$

<1> Product characteristic code

<2> Proximity switch

<3> \square No letter: inductive type

C: capacitive type

X: Simulative type

<4> The diameter of column sensor is expressed by number.

<5> A3: metal shell

A4: plastic shell

<6> The number expresses tested distance.

<7> Z: DC type J: AC type

<8> N: NPN

P: PNP

D: DC 2 wire

A: AC

<9> 1: Normally open

2: Normally close

3: One open and one closed

Photoelectric switch model implication description

$\frac{A}{\langle 1 \rangle}$ $\frac{E3}{\langle 2 \rangle}$ $\frac{F}{\langle 3 \rangle}$ $\frac{DS}{\langle 4 \rangle}$ $-$ $\frac{10}{\langle 5 \rangle}$ $\frac{N}{\langle 6 \rangle}$ $\frac{1}{\langle 7 \rangle}$

<1> Product characteristic code

<2> Photoelectric Switch

<3> F: column type

JK、M: flat type

S: oblong type

K: square type

<4> DS: diffusive emission type

R: feedback emission type

G: groove type

No letter: correlation type

<5> The numbers express test distance

<6> N: NPN

P: PNP

D: DC 2 wire

A: AC

<7> 1: Normally open

2: Normally close

3: One open and one closed



8 (800) 555-63-74 бесплатные звонки по РФ
+7 (473) 204-51-56 Воронеж
+7 (495) 505-63-74 Москва



www.purelogic.ru
info@purelogic.ru
394033, Россия, г. Воронеж,
Ленинский пр-т, 160, офис 149

Пн	Вт	Ср	Чт	Пт	Сб	Вс
8 ⁰⁰ -17 ⁰⁰			8 ⁰⁰ -16 ⁰⁰		выходной	