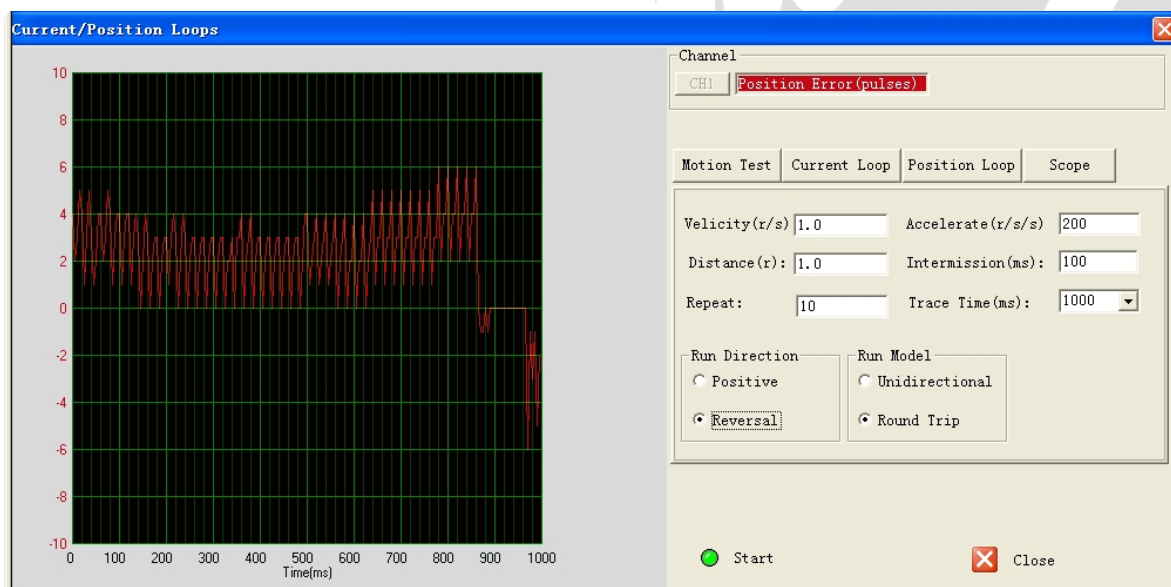


Software Operational Manual

IES Series Integrated Easy Servo



Leadshine reserves the right to make changes without further notice to any products herein to improve reliability, function or design. Leadshine does not assume any liability arising out of the application or use of any product or circuit described herein; neither does it convey any license under its patent rights of others.

Leadshine's general policy does not recommend the use of its products in life support or aircraft applications wherein a failure or malfunction of the product may directly threaten life or injury. According to Leadshine's terms and conditions of sales, the user of Leadshine's products in life support or aircraft applications assumes all risks of such use and indemnifies Leadshine against all damages.

©2012 by Leadshine Technology, All Rights Reserved

Change Log

Revision Date	Changes	Version
2012-05-18	Original Create	SM-IES-R20120518
2012-10-30	Change series name	SM-IES-R20121030

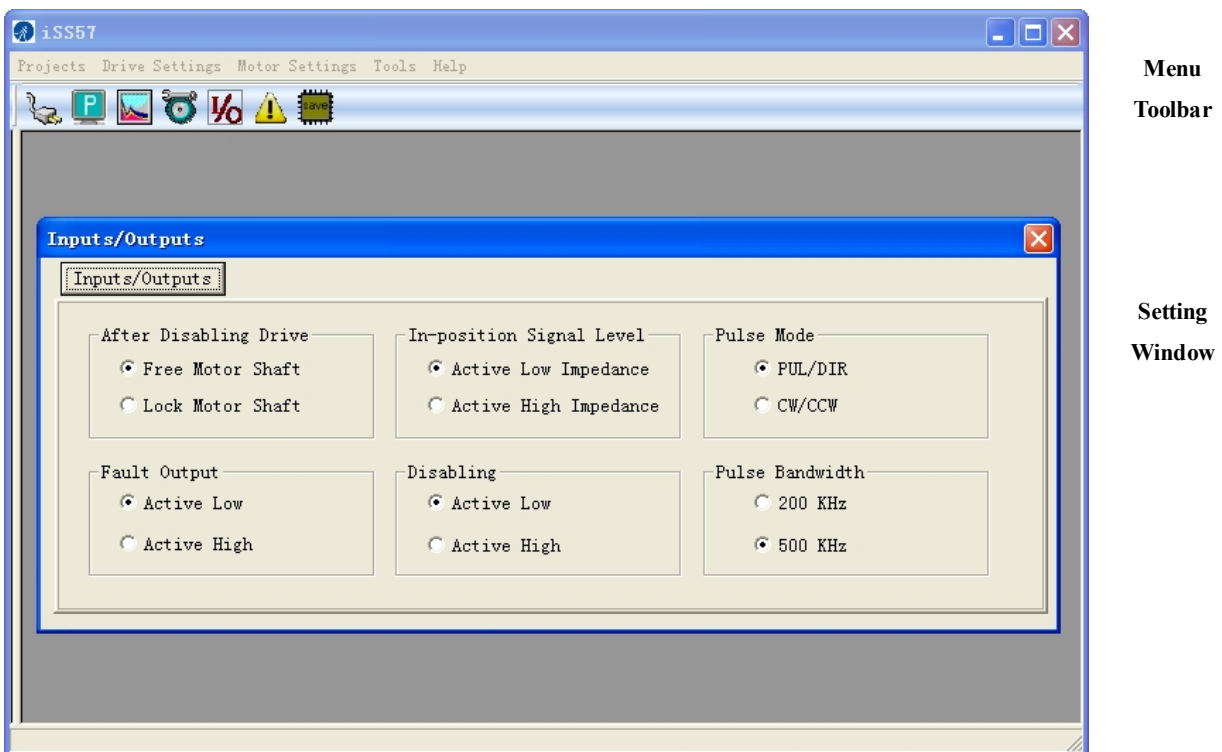
Table of Contents

Table of Contents	iii
Introduction	1
Workspace	1
Menus and Toolbar	1
Using the Software	2
Connecting Drive	2
Current / Position Loops Window	3
Motion Test Tab.....	3
Current Loop Tab	4
Position Loop Tab.....	6
Scope Tab	8
Inputs/Outputs Window.....	9
Download to Drive	10
Reset.....	10
Motor Settings Window.....	10
Parameters Operation	11
Read Drive.....	12
Open File	12
Save File.....	12
Download to Drive	12
Check Errors.....	13
Configuring the Drive	14
Configuring Inputs/Outputs.....	14
Configuring Motor Settings.....	14
Fine Tuning of Position Loop.....	15
Tuning Tips.....	15
Output Current.....	16
Contact Us.....	17

Introduction


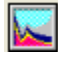




The ProTuner is a software tool designed to configure and tune the Leadshine's IES series integrated steppers. The user can configure the drive's output current, microstep resolution, command type, tune the current loop and adjust the position loop parameters in this software.

Workspace



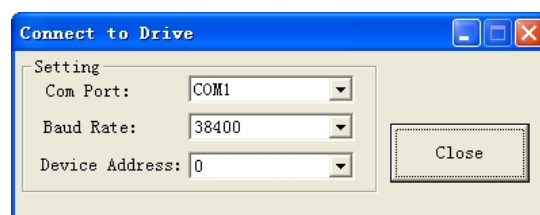
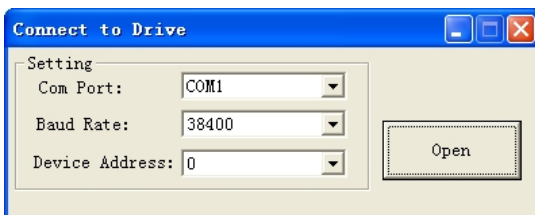
Menus and Toolbar

Menus and toolbars are at the top of the workspace. You can click menu bar to view pull-down menu. The toolbar below offers the most frequency commands.

Menu	Pull Down	Toolbar	Function
Projects ->	Connect to Drive		Open the serial port and connect to drive
	Exit	-	Exit from ProTuner
Drive Settings->	Current / Position Loops		Tune the current loop, adjust the position loop parameter and perform Motion Test.
	Inputs / Outputs		Set the command type, active level of the I/O signal.
	Download to Drive	-	Download the settings to the drive's NVM (Non-volatile Memory).
	Reset	-	Reset all settings.
Motor Settings->	Motor Settings		Set micro step resolution, position following limit and encoder resolution.
Tools->	Parameters		Download / upload data between the ProTuner and the drive. Or you can also save parameters to a file and restore parameters from a file.
	Check Errors		Check drive error
Help->	About ProTuner		Display ProTuner information

Using the Software

Connecting Drive



Connect to Drive window appears every time you open ProTuner. You can also open it by clicking **Projects->Connect To Drive** when the software is open. . Select the serial port number and click on the **Open**

button. The software will try to connect to the drive and read the settings. It may take several minutes. Please wait.



Before connecting the drive, please make sure:

- 1) The RS232 cable has been connected between the drive and PC serial port.
- 2) Power has been applied to the drive and the green LED is turned on.

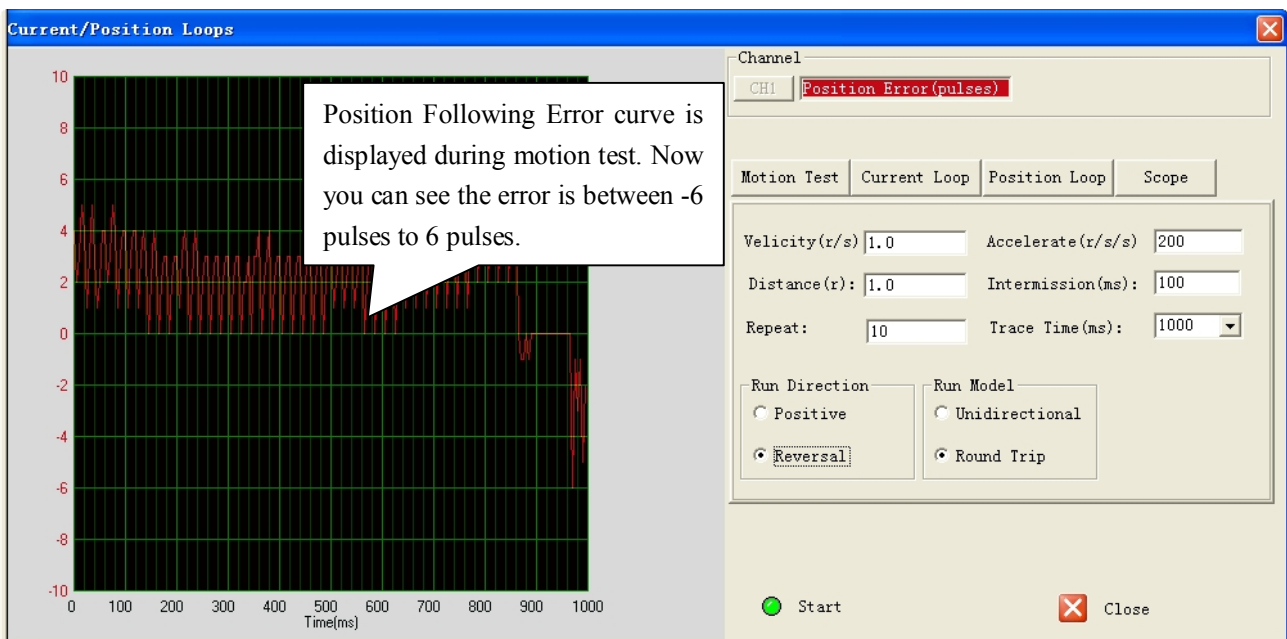
The motor is no need to connect to the drive if you just want to change the parameters but not tuning.



Do not connect or disconnect serial cable when drive is powered on. The drive's communication circuit may be damaged.

Current / Position Loops Window

Click **Drive->Current / Position Loops** to open this window. You can adjust the current loop Kp (proportional gain) and Ki (integral gain) in this window. The user can also perform the Motion Test and adjust the position loop control parameters.



Motion Test Tab

In the Motion Test tab, you can make the motor move without pulse generator or motion controller. Configure the trapezoid velocity file first and then click the **Start** button.

Velocity(r/s)	<input type="text" value="1.0"/>	Accelerate(r/s/s)	<input type="text" value="200"/>
Distance(r):	<input type="text" value="1.0"/>	Intermission(ms):	<input type="text" value="100"/>
Repeat:	<input type="text" value="10"/>	Trace Time(ms):	<input type="text" value="1000"/>
Run Direction		Run Model	
<input type="radio"/> Positive		<input type="radio"/> Unidirectional	
<input checked="" type="radio"/> Reversal		<input checked="" type="radio"/> Round Trip	
<input type="button" value="Start"/>		<input type="button" value="Close"/>	

Item	Description	Range
Velocity (r/s)	Target velocity of Motion Test.	1– 50 rps
Accelerate (r/r/s)	Acceleration of Motion Test.	1 – 65535 r/s ²
Distance (r)	Move distance of Motion Test.	1 – 65535 r
Intermission (ms)	Interval between moves.	1 – 65535 ms
Repeat	Repeat times.	1– 65535
Run Direction	Move direction.	Positive/ Reversal
Run Model	Motion Test mode includes single direction motion or two direction Motion. Unidirectional: Run in one direction, Round Trip: Run forward and back	-
Trace Time	The time to sample the position following error data.	100~3000 ms
Start	Click to start the Motion Test.	-
Stop	Stop the move immediately.	-
Close	Close the Current / Position Loops window	-

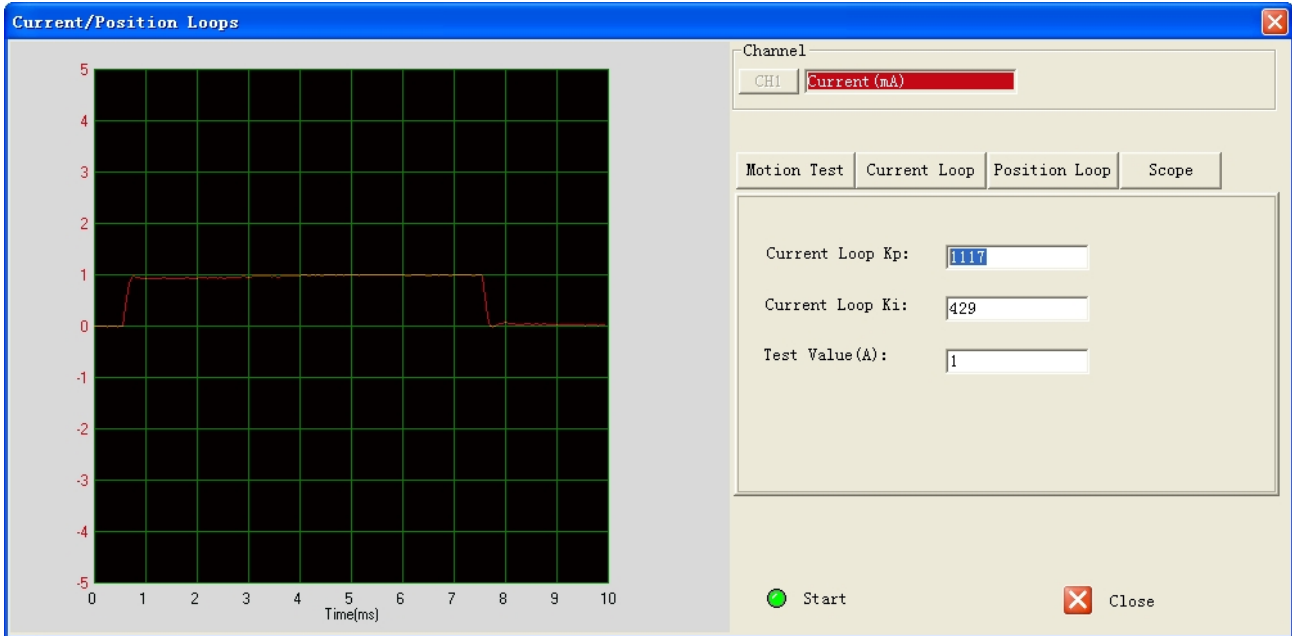
Current Loop Tab

Click **Current Loop** tab to open this window. The current loop parameter is related to the motor resistance and

inductance.



When power-up, the drive board will perform the auto-configuration and the current loop parameters will be calculated automatically. Here, this window is just for check. It is unnecessary to the current loop parameters by your self.



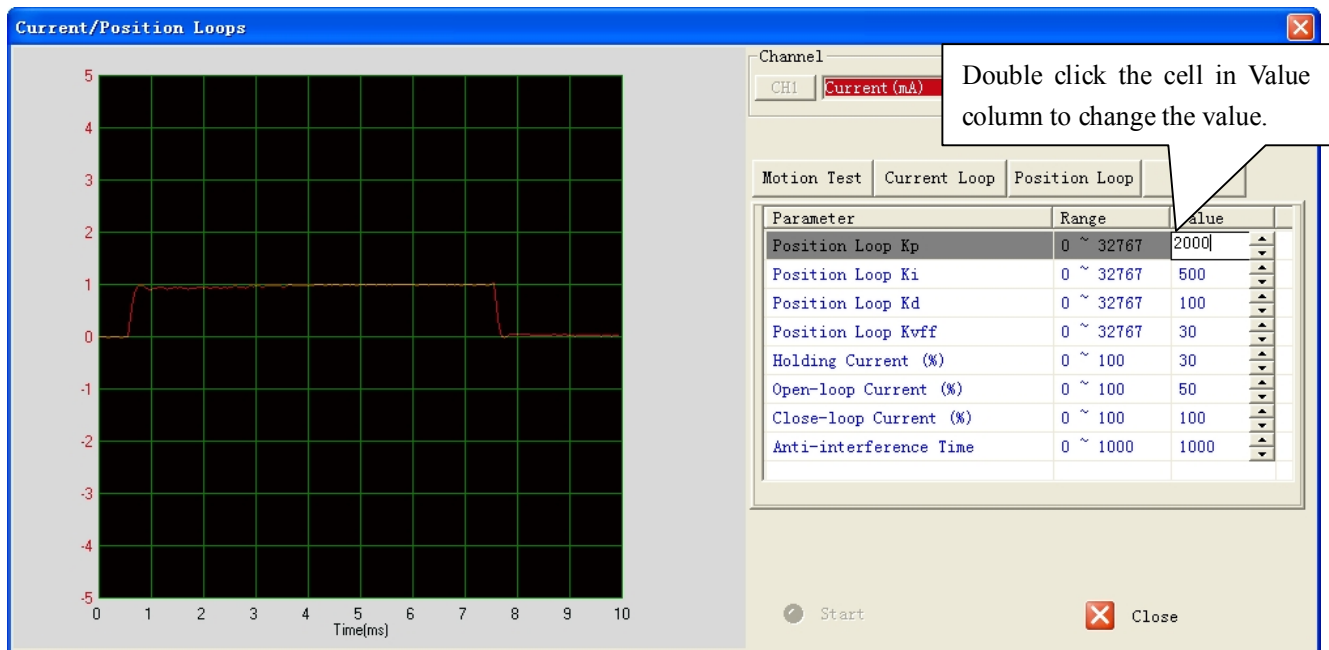
Item	Description	Range
Current Loop Kp (Proportional Gain)	Increase Kp to make current rise fast. Proportional Gain determines the response of the drive to current setting command. Low Proportional Gain provides a stable system (doesn't oscillate), has low stiffness, and large current error, causing poor performances in tracking current setting command in each step. Too large Proportional Gain values will cause oscillations and unstable systems.	1 – 65535
Current Loop Ki (Integral Gain)	Adjust Ki to reduce the steady error. Integral Gain helps the drive to overcome static current errors. A low or zero value for the Integral Gain may have current errors at rest. Increasing the Integral Gain can reduce the error. If the Integral Gain is too large, the systems may “hunt” (oscillate) about the desired position.	1 – 65535
Test Value (A)	The current amplitude for the step response. Let this value not exceed the maximum output current of the drive.	0.5-2A
Start	Enter Kp and Ki and click this button to activate the test. A target curve (red) will be displayed on the screen for user analysis.	-

Position Loop Tab

Click **Position Loop** tab to open this window. You can adjust the position loop parameter to get lower noise or fast response of the motor. Double click the value to change the parameters.



The default values of the position loop parameters have been optimized and they are suitable for most of the application. It is unnecessary to tune them when the motor runs very well. It is only recommended to adjust them when the actual performance is not good. For example, motor generates a big noise, or motor stalls easily at high speed.

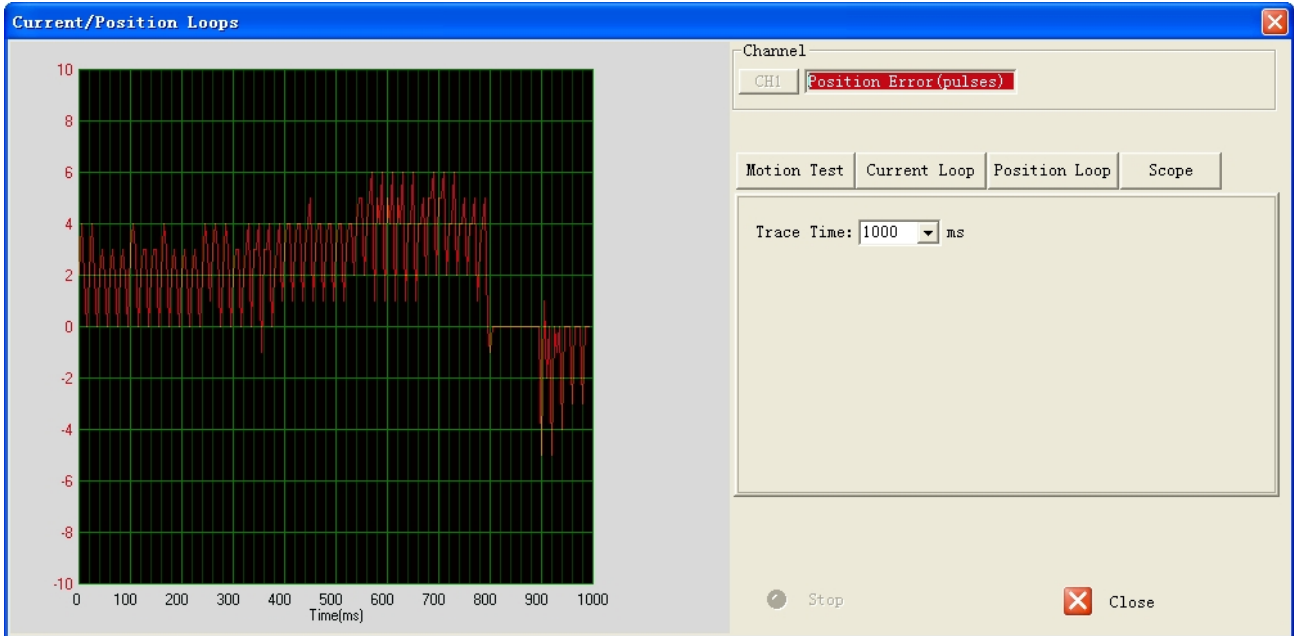


Item	Description	Range
Position Loop Kp (Proportional Gain)	Position Proportional Gain. Proportional Gain determines the response of the system to position errors. Low Proportional Gain provides a stable system (doesn't oscillate), has low stiffness, and large position errors under load. Too large Proportional Gain values will cause oscillations and unstable systems.	0~ 32767

Position Loop Ki (Integral Gain)	<p>Integral Gain. Integral Gain helps the control system overcome static position errors caused by friction or loading. The integrator increases the output value as a function of the position error summation over time. A low or zero value for the Integral Gain may have position errors at rest (that depend on the static or frictional loads and the Proportional Gain). Increasing the Integral Gain can reduce these errors. If the Integral Gain is too large, the systems may “hunt” (oscillate at low frequency) about the desired position.</p>	0~ 32767
Position Loop Kd (Derivative Gain)	<p>Position Derivative Gain. Derivative Gain provides damping by adjusting the output value as a function of the rate of change of error. A low value provides very little damping, which may cause overshoot after a step change in position. Large values have slower step response but may allow higher Proportional Gain to be used without oscillation.</p>	0 – 32767
Position Loop Kvff (Feed-forward Gain)	<p>Feed-forward gain. It speeds up the system response.</p>	0 – 32767
Holding Current (%)	<p>Motor current when there is no pulse applied to the drive.</p>	0%-100%
Open-loop Current (%)	<p>Motor current when the drive goes into open loop control mode.</p>	0%-100%
Close-loop Current (%)	<p>Motor current when the drive goes into close loop control mode.</p>	0%-100%
Anti-interference Time	<p>Ignore it.</p>	0-1000 ms

Scope Tab

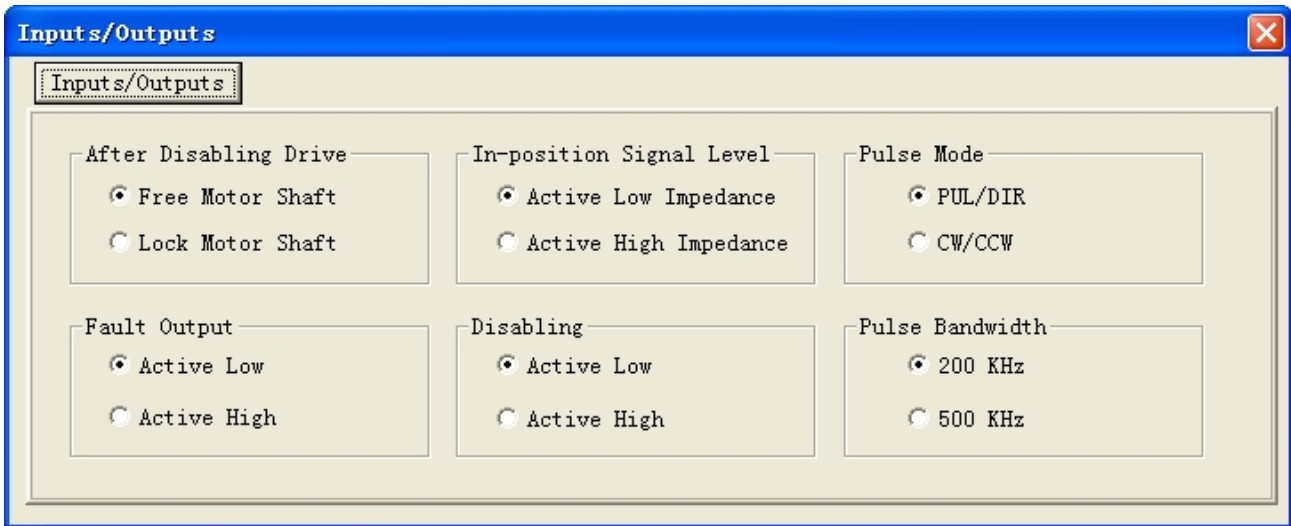
Click **Scope** tab to open this window. You can monitor the position following error in this window. When the IES motor runs in real application, this window helps to check the performance.



Item	Description	Range
Trace Time	Time to sample the position following error. For example, if the trace time is 1000ms, the drive board acquires the error data every 1000ms.	0~ 32767
Start	Start to monitor and display the position following error.	-
Stop	Stop monitoring.	-

Inputs/Outputs Window

Click **Drive->Inputs/Outputs** to open the I/O configuration window. You can chose to free or lock motor shaft after disabling drive, select the Pulse Active Edge, active level of In-position output, active level of fault output, active low disabling or active high disabling and pulse bandwidth.

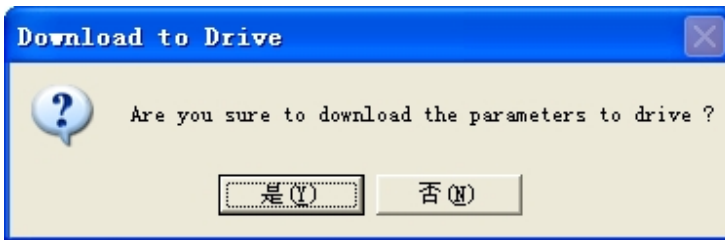


Item	Description	Range
After Disabling Drive	Select to free or lock the motor shaft after disabling drive. If the “free motor shaft” is selected, the drive board will close all the power state after disabling drive and the motor coil current is zero. You can perform manual move via the “free motor shaft” selection. Otherwise if the “lock motor shaft” is selected, the motor shaft will be lock after disabling drive and the motor current keeps as the holding current.	Free motor shaft / Lock motor shaft
In-position Signal Level	Set the active output impedance of the in-position signal. If it is active low, the impedance between PED+ and PED- is low when the target position is reached. Otherwise if it is active high, the impedance between PED+ and PED- is high when the target position is reached.	Active Low /Active High
Pulse Mode	Pulse mode of control signal. Select PUL/DIR or CW/CCW according to command type of motion controller. PUL/DIR means pulse and direction mode; CW/CCW means double pulses mode.	PUL/DIR CW/CCW

Fault Output	Set the active output impedance of the fault signal. If it is active low, the impedance between ALM+ and ALM- is low when the target position is reached. Otherwise if it is active high, the impedance between ALM+ and ALM- is high when the target position is reached.	Active Low /Active High
Disabling	Set active input level of disable signal.	Active Low /Active High
Pulse Bandwidth	Select the input pulse bandwidth or the maximum input frequency.	200K/500K

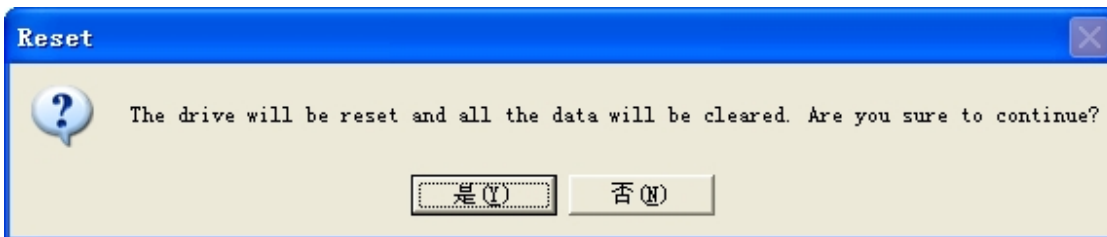
Download to Drive

The parameter values are only loaded to the drive board's RAM when you change them in ProTuner. After power-off, they will be lost. So you have to click **Drive->Download to Drive** to save all parameters to the drive board's non-volatile memory.



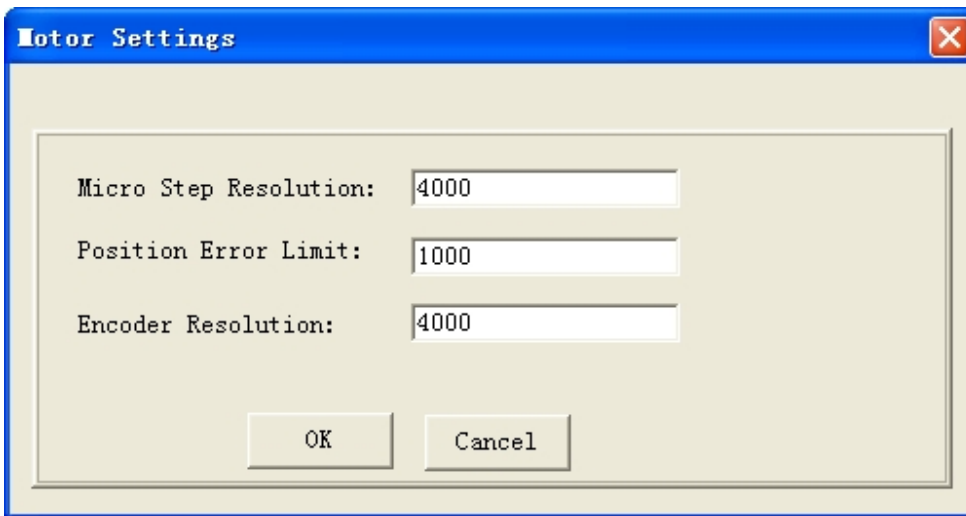
Reset

It is possible that the parameter value is changed by accident and you want to restore the default value. You can click **Drive->Reset** for this purpose. The following confirmation window will appear.



Motor Settings Window

Click **Drive->Motor Settings** to open this window. You can set the micro step resolution, position following error limit and encoder resolution in this window.



Item	Description	Range
Micro Step Resolution	Drive's Micro Step setting for the motor.	1~51200
Position Error Limit	The limit of the difference between commanded position and the actual measured position. When position following error exceeds the Position Following Error Limit in the drive, the following error protection will be activated.	0~65535
Encoder Resolution	The encoder lines. $4 \times$ of the actual resolution. For example, if the encoder resolution is 1000, it is 4000. Note: Do not change the default value as it must be corresponded to the actual encoder resolution.	200-10000

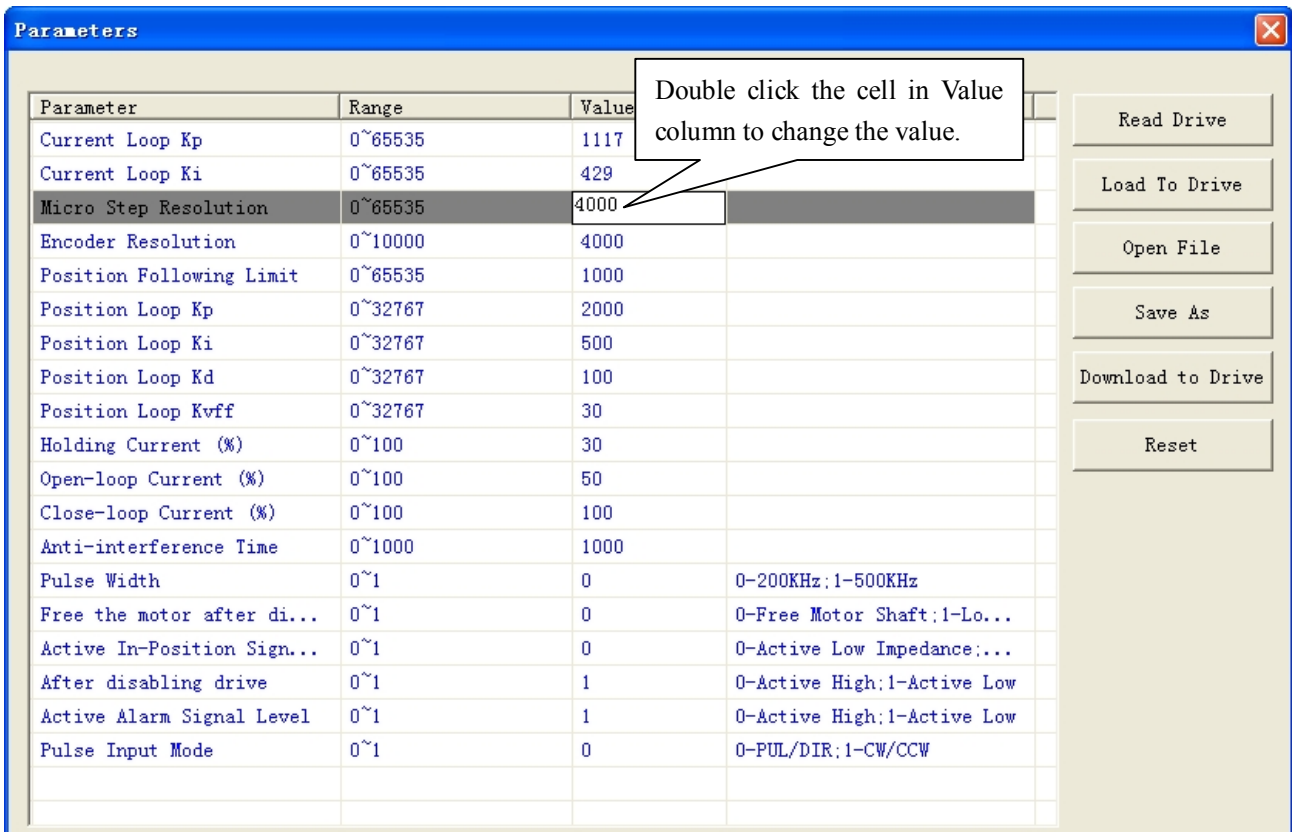
Parameters Operation

Click **Tools->Parameters** to open the parameter operation window. You can deal with the drive parameters in this window as follows:

- 1) **Read Drive:** Read parameters from the drive;
- 2) **Load To Drive:** Load parameters to drive;
- 3) **Open File:** Open a PC configuration file with .lsr extension and load parameters drive;
- 4) **Save File:** Save the parameters to a PC configuration file with .lsr extension;
- 5) **Download to Drive:** Download parameters to the drive's nonvolatile memory;
- 6) **Reset:** Restore factory settings of the drive.

Read Drive

Click “Read drive” button to upload all parameters from drive. Double click the value of the parameter, you can change the value.



The screenshot shows a window titled "Parameters" with a table of motor parameters. A callout box points to the "Value" column of the "Micro Step Resolution" row, stating: "Double click the cell in Value column to change the value."

Parameter	Range	Value	
Current Loop Kp	0~65535	1117	
Current Loop Ki	0~65535	429	
Micro Step Resolution	0~65535	4000	
Encoder Resolution	0~10000	4000	
Position Following Limit	0~65535	1000	
Position Loop Kp	0~32767	2000	
Position Loop Ki	0~32767	500	
Position Loop Kd	0~32767	100	
Position Loop Kvff	0~32767	30	
Holding Current (%)	0~100	30	
Open-loop Current (%)	0~100	50	
Close-loop Current (%)	0~100	100	
Anti-interference Time	0~1000	1000	
Pulse Width	0~1	0	0-200KHz;1-500KHz
Free the motor after di...	0~1	0	0-Free Motor Shaft;1-Lo...
Active In-Position Sign...	0~1	0	0-Active Low Impedance:...
After disabling drive	0~1	1	0-Active High;1-Active Low
Active Alarm Signal Level	0~1	1	0-Active High;1-Active Low
Pulse Input Mode	0~1	0	0-PUL/DIR;1-CW/CCW

Buttons on the right side of the window: Read Drive, Load To Drive, Open File, Save As, Download to Drive, Reset.

Open File

If you want to load parameters from a PC file, click **Open File** button in the **Parameters** Window. The parameters in the software’s workspace will be updated.

Save File

Click **Save File** button to save the parameter of current workspace to a file. This file can be used for the other drive.

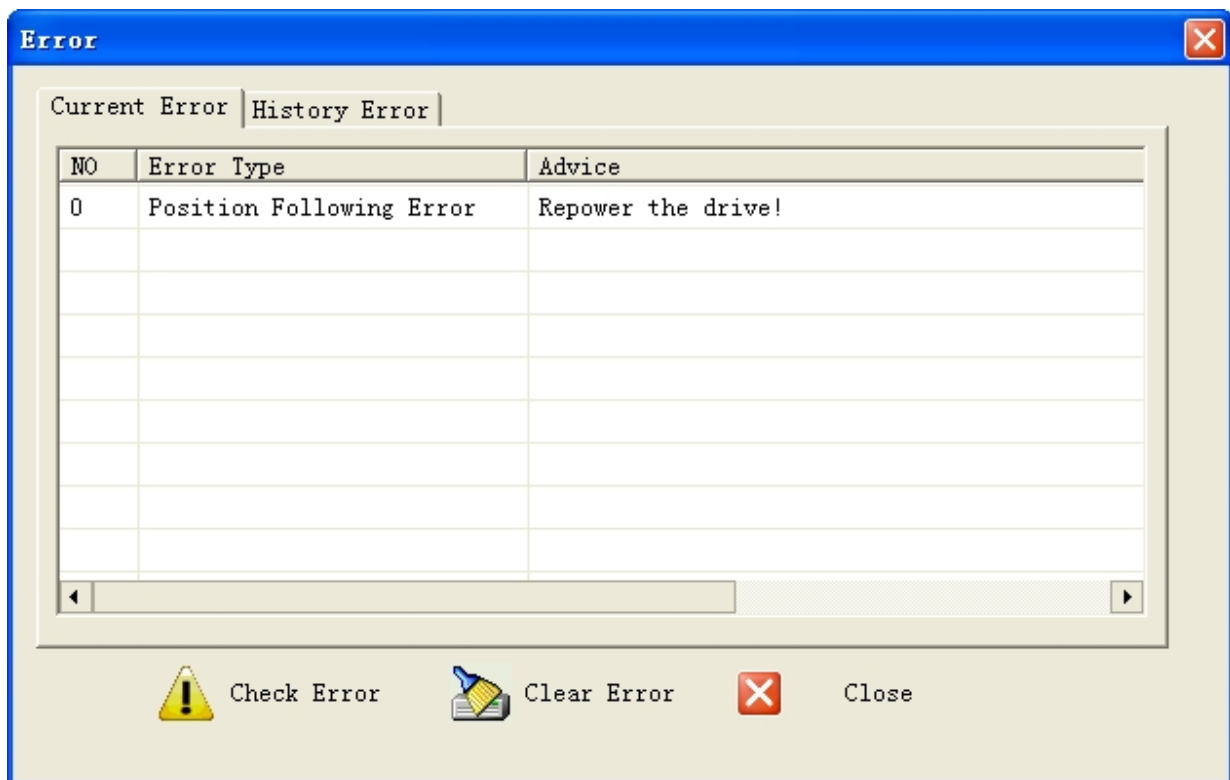
Download to Drive

Click **Download button** to download the changes to the drive’s nonvolatile memory.

Check Errors

You can check the active error or the error log of the drive in this window. Type of error is shown as follows:

Item	Description
Over Current Error	Error occurs when the motor coil current exceeds the drive's current limit.
Over Voltage Error	Error occurs when the input voltage exceeds the drive's voltage limit
Position Following Error	Error occurs when the actual position following error exceeds the limit which is set in Position Error Limit .



Configuring the Drive

Usually, you can follow the steps below to configure the drive.

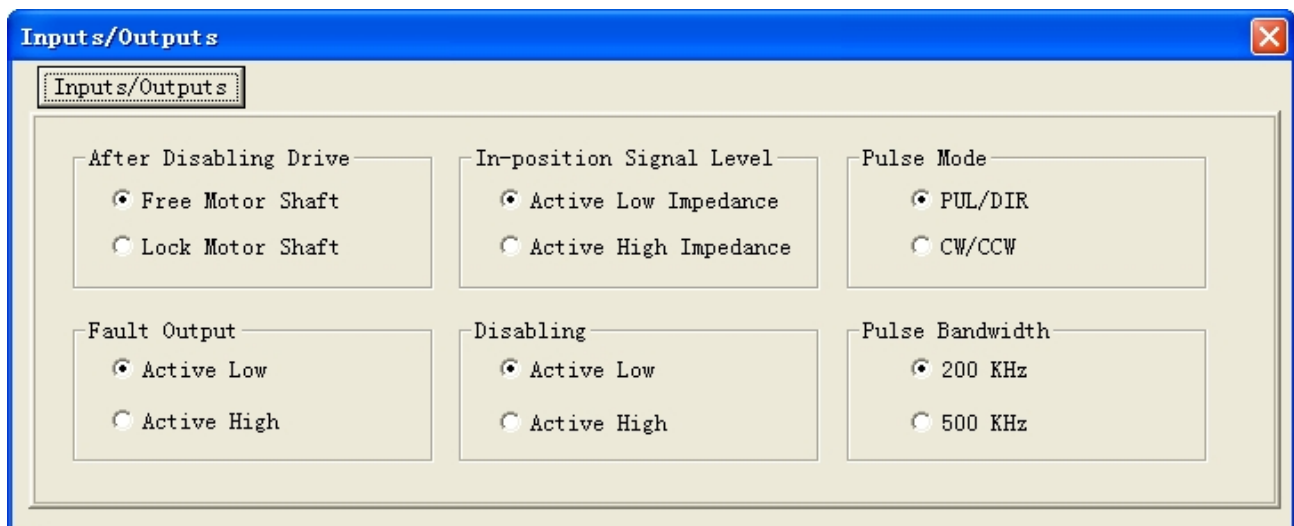
- 1) Set Input/Output parameters such as pulse mode, pulse bandwidth, pulse active edge, active level of fault output, position following limit and micro step resolution for your application.
- 2) Adjust the position loop parameters when lower noise or fast speed is required.



The motor must be connected to the drive before trying to configure the drive.

Configuring Inputs/Outputs

Click **Drive->Inputs/Outputs** to open the setting window. You can set pulse mode, pulse active edge, active impedance of fault output and pulse bandwidth in this window. See more information in **Using the Software** chapter.



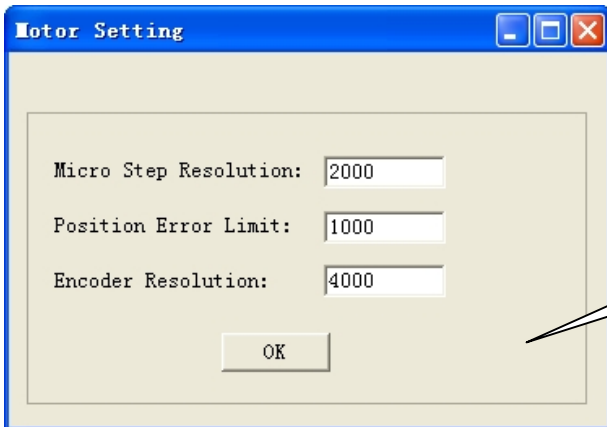
Configuring Motor Settings

Click **Drive->Motor Settings** to open the motor setting window. You can set the micro step resolution, position error limit and check the encoder resolution in this window. See more information in **Using the Software** chapter.

The microstep resolution can be set from 200- 51200 with step 1. High resolution Micro Step makes the motor move more smoothly. Low Micro Step resolution reduces the high frequency requirement to the controller. If the application requires small position following error, reduce the **Position Error Limit**. Usually it is recommended to set it to 1000.



Do not change the default value as it must be corresponded to the actual encoder resolution.



Do not change the default value as it must be corresponded to the actual encoder resolution.

Fine Tuning of Position Loop



Leadshine already loads default current-loop parameters and position-loop parameters. Those default parameter values have been optimized. They should be good enough for most industrial applications, and there is no need to tune them. However, if you want to fine tune the IES for best performance for your applications, ProTuner allows you to adjust those current-loop and position-loop parameters

To adjust the position loop parameter, click **Drive->Current Loop / Position Loops** to open the window. Then click the **Position Loop tab**. The position loop parameters appear and you can adjust them by the steps as follows:

- 1) Select the row.
- 2) Double click the cell value in Value column. The number will be selected and you can change it.
- 3) Click other place to confirm the input.

See more information in **Using the Software** chapter.



The effect of K_p , K_d , K_i and K_vff is similar as the items in servo control system. But they are not completely the same. You do can not tune them as you done in servo system. The adjustable range of K_p , K_d , K_i and K_vff is from 0-32767. However, do not give too low or high value to these parameters. It is recommended to adjust them by 10%-30%. Otherwise the drive's performance may go bad!

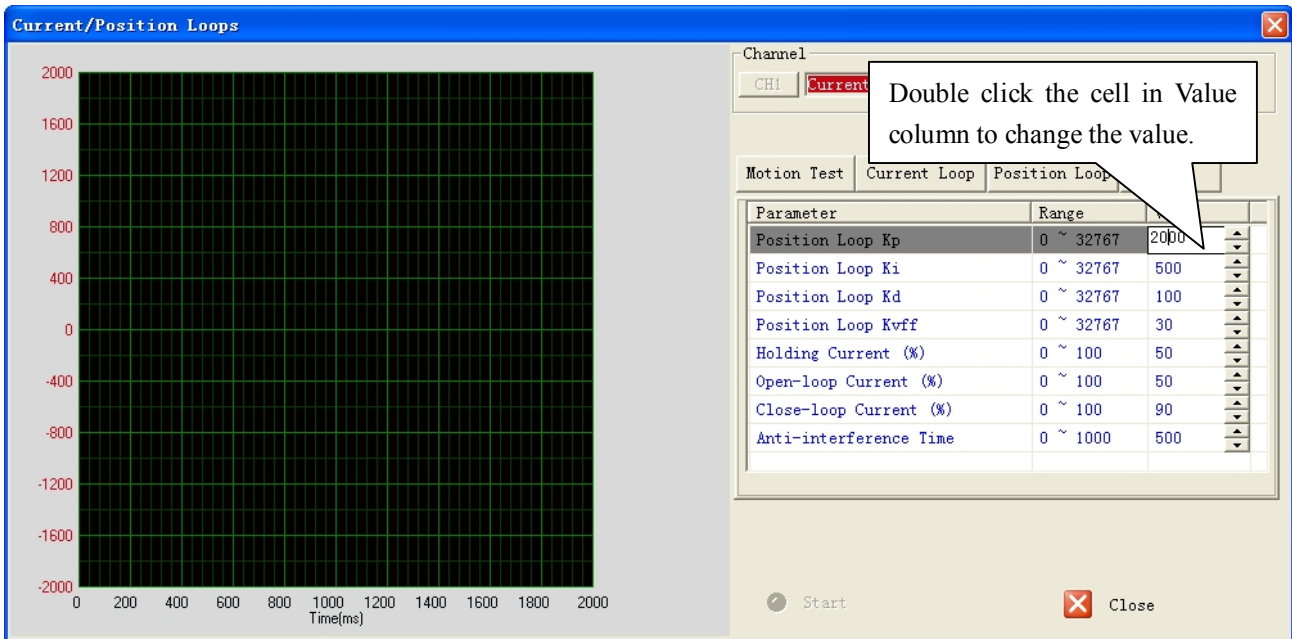
Tuning Tips

Faster Response, High Speed, High Torque, Smooth Move

Increase the K_p , K_d , K_vff , Open-Loop Current and Close-loop Current.

Lower Motor Noise, Lower Motor Heating

Decrease the K_p , K_d , K_vff , Open-Loop Current and Close-loop Current



Output Current

The output current ranges between the holding current and the close-loop current. When there is no pulse sent to the drive, the IES goes into idle mode and the actual motor current is determined by the holding current percentage (similar to “idle current” of open loop stepper drives). In normal working mode, the IES monitors the actual shaft position all the time. The current outputted to the motor changes dynamically based on the tracking error between the actual position and the commanded position.

By default, holding current percentage of the IES is 40% of the peak current and the close-loop current percentage is 100%, unless you change them from Leadshine’s configuration software (see software manual). Actual current outputted to the motor can be calculated as follows:

$$\text{Holding Current} = 6A \times \text{Holding Current Percentage (\%)}$$

$$\text{MAX Close loop Current} = 6A \times \text{Close Loop Current Percentage (\%)}$$

Low holding current can reduce motor heating however also reduces the holding torque which is used to lock the motor shaft at standstill. It is recommended to determine the holding current by whether or not there is big vibration at start-up and how much lock torque is required, based on your actual applications.



The holding current also affects the torque at high speed! If the motor can not run into high speed with default holding current, try to increase the holding current to 80% to 100%. However, motor heating at standstill may be increased too.

Contact Us

China Headquarters

Address: 3/F, Block 2, Nanyou Tian'an Industrial Park, Nanshan District Shenzhen, China

Web: <http://www.leadshine.com>

Sales Hot Line:

Tel: 86-755-2641-7674 (for Asia, Australia, Africa region)

86-755-2640-9254 (for Europe region)

86-755-2641-7617 (for Europe region)

Fax: 86-755-2640-2718

Email: sales@leadshine.com.

Technical Support:

Tel: 86-755-2641-8447, 86-755-2641-8774, 86-755-2641-0546

Fax: 86-755-2640-2718

Email: tech@leadshine.com(for All)

Leadshine U.S.A

Address: 25 Mauchly, Suite 318 Irvine, California 92618

Tel: 1-949-608-7270

Fax: 1-949-608-7298

Web: <http://www.leadshineUSA.com>

Email: sales@leadshineUSA.com and support@leadshineUSA.com.