



Summary

- > Single output: power 350W
- > Input voltage: 90 ∞ 132VAC/180 ∞ 264VAC by switch

215 × 115 × 50 mm

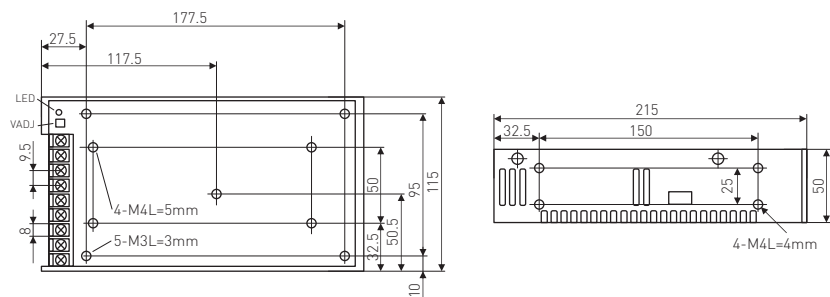
General Specification

Specification	Model	S-350-5	S-350-9	S-350-12	S-350-15	S-350-18	S-350-24
DC output voltage, current		5V 0 ∞ 50A	9V 0 ∞ 38A	12V 0 ∞ 29A	15V 0 ∞ 23.3A	18V 0 ∞ 19.4A	24V 0 ∞ 14.6A
Wave and noise		150mVp-p	150mVp-p	150mVp-p	150mVp-p	150mVp-p	150mVp-p
Inlet wire stability		± 0.5%	± 0.5%	± 0.5%	± 0.5%	± 0.5%	± 0.5%
Load stability		± 0.5%	± 0.5%	± 0.5%	± 0.5%	± 0.5%	± 0.5%
Efficiency		73%	78%	83%	83%	84%	85%
Adjustable range for DC voltage		± 10%	± 10%	± 10%	± 10%	± 10%	± 10%
Input voltage range		90 ∞ 132VAC/180 ∞ 264VAC by switch 254 ∞ 370VDC 47 ∞ 63Hz					
Impact current		Cold start current 25A/115VAC 50A/230VAC					
Overload protection		105% ∞ 135% cut off the output, automatic recovery					
Over voltage protection		115% ∞ 150% shut down O/P voltage, re-power on to recover					
Setup, rise, hold up time		200ms, 50ms, 20ms/230VAC at full load					
Withstand voltage		I/P – O/P: 1.5kV I/P – FG: 1.5kV O/P – FG: 0.5kV 1 minute					
Isolation resistance		I/P – O/P I/P – FG O/P – FG: 500VDC/100MΩ					
Working temperature		-10°C ∞ +50°C					
Dimension		215 × 115 × 50 mm					
Weight		1 kg					
Packing		45.5 × 31.5 × 26CM/20PCS/20 kg					

Overall dimension (mm)

Terminal Pin No.Assignment

- Pin 8,9: AC input
- Pin 7: GND
- Pin 4,5,6: DC output-V
- Pin 1,2,3: DC output+V





Summary

- > Single output: power 350W
- > Input voltage: 90 ∞ 132VAC/180 ∞ 264VAC by switch

215 × 115 × 50 mm

General Specification

Specification	Model	S-350-27	S-350-36	S-350-48	S-350-60	S-350-70	S-350-110
DC output voltage, current		27V 0 ∞ 13A	36V 0 ∞ 9.7A	48V 0 ∞ 7.3A	60V 0 ∞ 6A	70V 0 ∞ 5A	110V 0 ∞ 3.2A
Wave and noise		150mVp-p	150mVp-p	150mVp-p	200mVp-p	200mVp-p	240mVp-p
Inlet wire stability		± 0.5%	± 0.5%	± 0.5%	± 0.5%	± 0.5%	± 0.5%
Load stability		± 0.5%	± 0.5%	± 0.5%	± 0.5%	± 0.5%	± 0.5%
Efficiency		85%	85%	86%	86%	86%	86%
Adjustable range for DC voltage		± 10%	± 10%	± 10%	± 10%	± 10%	± 10%
Input voltage range		90 ∞ 132VAC/180 ∞ 264VAC by switch 254 ∞ 370VDC 47 ∞ 63Hz					
Impact current		Cold start current 25A/115VAC 50A/230VAC					
Overload protection		105% ∞ 135% cut off the output, automatic recovery					
Over voltage protection		115% ∞ 150% shut down O/P voltage, re-power on to recover					
Setup, rise, hold up time		200ms, 50ms, 20ms/230VAC at full load					
Withstand voltage		I/P – O/P: 1.5kV I/P – FG: 1.5kV O/P – FG: 0.5kV 1 minute					
Isolation resistance		I/P – O/P I/P – FG O/P – FG: 500VDC/100MΩ					
Working temperature		-10°C ∞ +50°C					
Dimension		215 × 115 × 50 mm					
Weight		1 kg					
Packing		45.5 × 31.5 × 26CM/20PCS/20 kg					

Overall dimension (mm)

Terminal Pin No.Assignment

- Pin 8,9: AC input
- Pin 7: GND
- Pin 4,5,6: DC output-V
- Pin 1,2,3: DC output+V

